

User Manual

For Toyota Touch2 & Entune2.0 System

1. Functional Statement



Apple
CarPlay



Android
Auto



Screen
Mirroring



USB
Media



Advanced
Chip



Front
Camera



Bluetooth
Calling

CarPlay / Android Auto

The built-in vehicle machine interaction system of iPhone cooperates with the central control knob button to provide voice command and control of phone, information, navigation, music, to operate Siri voice interaction to obtain more information; Support wireless and wired connection Carplay.

The original ecological Android car-machine interaction system developed by Google, voice control of phone, information, navigation, music built-in voice control system.

Reversing Video Input

Smart module can decode video and can be equipped with rear-view video input . (The intelligent module can decode video and install rear view)

Mirroring

Supports wired & wireless mirroring functions for iphone and Android phones.

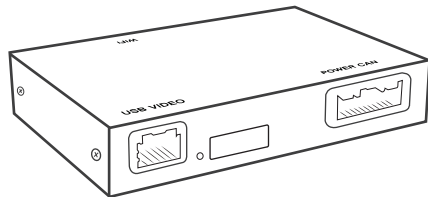
USB Video Playback

Automatic media playback function, can be directly inserted into U disk to play video and audio media.

2. Specifications

Operating Voltage : 5V	Stored temperature : $-30\sim+85^{\circ}\text{C}$
Operating temperature : $-30\sim+75^{\circ}\text{C}$	Environment humidity : $\leq 98\%$ (at 45°C) $65\pm 5\%$ (rated)
Power consumption : 1A (rated) , 3A(Max)	Shutdown current : 300mA (Clock is on)
Quiescent Current : less than 3mA	
Charging current: $\leq 2\text{A}$, when the USB charging current $> 1\text{A}$, the host should activate the circuit protection function to control the current below 1.5A, to avoid burning the product.	

3. Product Information



Host (Size: 128*84*25mm)

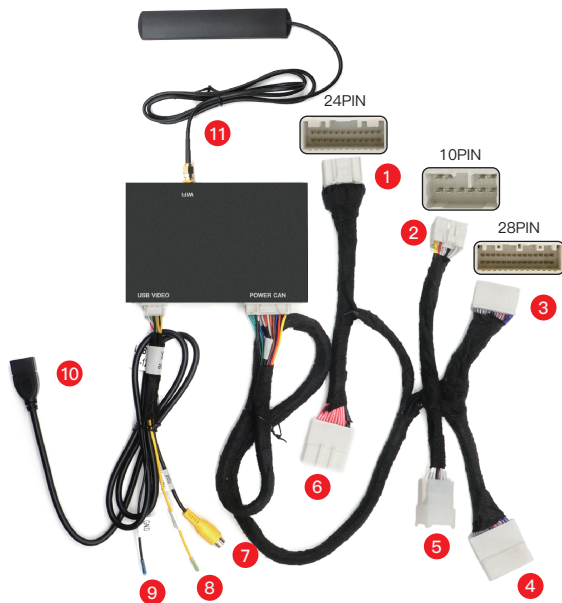


USB Video Cable



Power Cable

4. Connection Diagram



- 1 Connect with Original Car's Main Unit-24PIN
- 2 Connect with Original Car's Main Unit-10PIN
- 3 Connect with Original Car's Main Unit-28PIN
- 4 Connect with Original Car's Plug-28PIN
- 5 Connect with Original Car's Plug-10PIN
- 6 Connect with Original Car's Plug-24PIN
- 7 Forward Looking Input
- 8 Camera Power Supply
- 9 GND
- 10 USB Cable
- 11 WIFI Antenna

5. Vehicle Dialing Table



Model \ Dialing	1	2	3	4	5	6	7	8
Fujitsu Panasonic	OFF	OFF	OFF	OFF	OFF	OFF	OFF	OFF
Pioneer	OFF	OFF	OFF	OFF	ON	OFF	OFF	OFF

All OFF by default:

Applicable to Panasonic Fujitsu mainframes

5-ON:

Applicable to Pioneer mainframes

6. Switch to CarPlay System

The product supports the original car system and there are three ways to switch to CarPlay interface:

1. In the original car screen:

First click on the "FM" icon,
then click on the "AUX" icon to enter:



2. In the steering wheel:

Long press the voice button to enter

3. If there is no voice button:

Press the "MODE" button to enter

7. Control Key Operation Instructions

● Support original car button control

- 1 Volume +
- 2 Volume -
- 3 Previous song
- 4 Next song
- 5 Answer the phone
- 6 Hang up the phone
- 7 Short press to wake up Siri
Long press 2s to switch CarPlay system



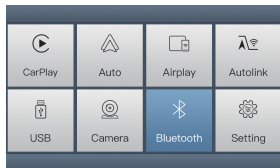
● Support touch screen control



8. Wireless CarPlay Connection Method

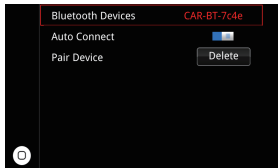
Wired Connection Method:

Connect the phone cable with the original car, and then Click “Use CarPlay” in the pop up window.



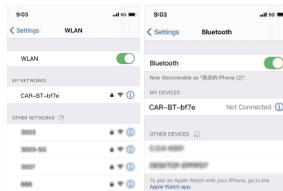
Step 1

Select “Bluetooth”



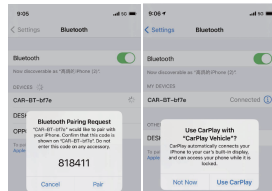
Step 2

Check the Bluetooth Device name as “CAR-BT-xxxx”



Step 3

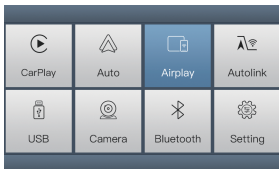
Turn on WIFI and keep it on, then back to Bluetooth to connect CarPlay



Step 4

Select Bluetooth Device name as “CAR-BT-XXX”–Pair–Use CarPlay while that pop up a request window

9. Apple Wireless Screen Mirroring



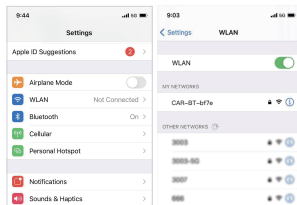
Step 1

Select “Airplay”



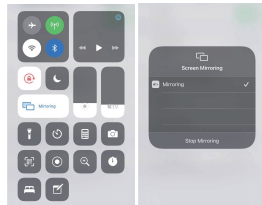
Step 2

Turn on the phone, select the “Wireless LAN” option, the search bar will show the “CAR-WIFI-XXX” and click the link, the password is 66668888



Step 3

After the carplay wifi connection is successful, return to the main interface of phone, open the shortcut menu page, select “Screen Mirroring” and turn on



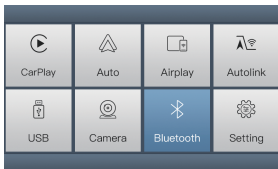
Step 4

After the mobile phone “Screen Mirroring” is turned on, select “Airplay” to complete the wireless Screen Mirroring

10. Wireless Android Auto Connection Method

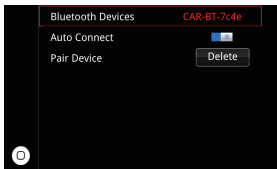
Wired Connection Method:

Connect the phone cable with the original car, and then click “Allow” in the pop up window.



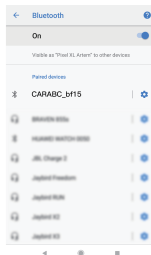
Step 1

Select the “Bluetooth”



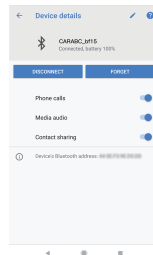
Step 2

Check the Bluetooth name starting with “CAR-BT-xxx” in the Bluetooth interface



Step 3

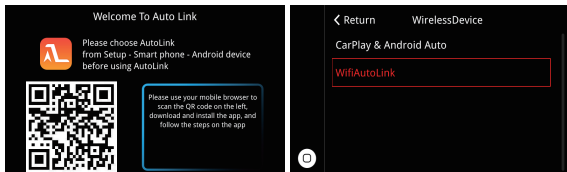
Click on the Bluetooth name beginning with the link “CAR-BT-xxx”, a pairing request will pop up, just click Pairing; after the Bluetooth pairing is successful, the phone will pop up a request to enable the carplay option, just confirm it.



Step 4

Click the Bluetooth name at the beginning of the link “CAR-BT-xxx” and click pairing. Turn on the Android auto app on the mobile phone, and the system will connect automatically.

11. Android Wireless Screen Mirroring

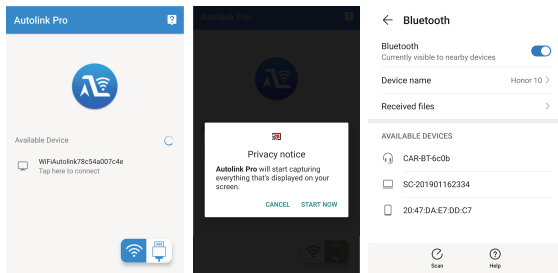


Step 1

Android phone scan and download the Auto Link by using the Browser.

Step 2

Switch the WifiAutoLink to “ON” in the Settings page.



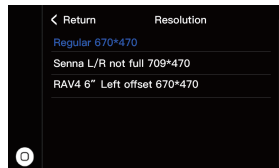
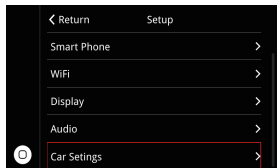
Step 3

Open the Auto link software you downloaded, search “WiFiAutoLink-xxx” and connect, then click the “START NOW” on the phone prompt box.

Step 4

The touch reverse control and the media sound can be realized after the Auto Link connection, media sound needs to connect with Bluetooth.

12. Settings



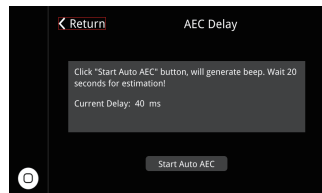
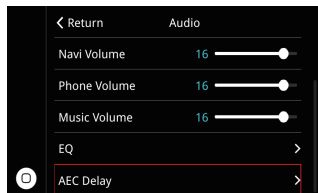
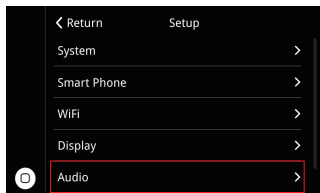
Camera selection:

Select OEM Camera and Aftermarket Camera

Default regular resolution: 670*470

Left and right display incomplete selection: Senna L/R not full 709*470

RAV4 Corolla display leftward selection: RAV4 6" Left offset 670*470



Steps: Settings–Audio–AEC Delay, then click the button “Start Auto AEC”

Call Echo Cancellation: If there is an echo, please click this button for echo correction.

When correcting the echo, we must :

1. Keep quiet in the car;
2. Turn the volume to a moderate position, and then click "start" to cancel echo.